

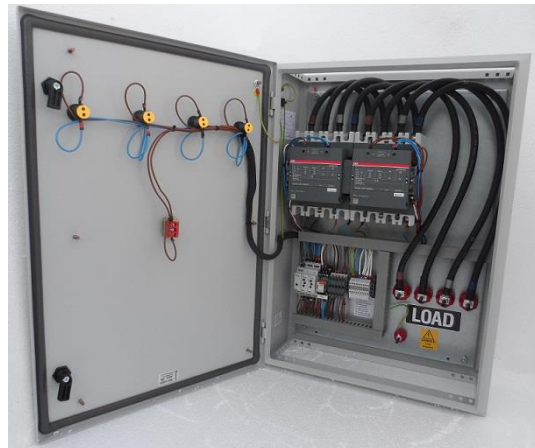
## Automatic load transfer switch

### Standard features (all control types)

- 1 x Pair of contactors or circuit breakers, mechanically and electrically interlocked
- 1 x Set of control and monitoring fuses
- 1 x Set of generator, mains and load terminations

### **0 – 800 Amp**

Mechanically and electrically interlocked contactors are used for the load transfer switch. Fitted in proprietary manufactured wall mounting cubicles with hinged front access door and removable gland plates to the top and base. Finished in grey RAL7035.



### **1000 – 1600 Amp**

Mechanically and electrically interlocked moulded case circuit breakers (non-auto) with motor operators are used for the load transfer switch. Fitted in proprietary manufactured floor standing cubicles with hinged front access door and removable side and rear panels for ease of installation. Removable gland plates to the top and base. Finished in grey RAL7032.

### **2000 – 6300 Amp**

Mechanically and electrically interlocked air circuit breakers (non-auto) with motor operators are used for the load transfer switch. Fitted in proprietary manufactured floor standing cubicles with hinged front access door and removable side and rear panels for ease of installation. Removable gland plates to the top and base. Finished in grey RAL7032.

### Additional features Control type B3 F3 B1 F1

Contactor can be used on higher ratings and circuit breakers on lower ratings.

3 phase mains detection	*	*		
1 phase generator detection			*	*
Generator available indicator	*	*	*	*
Generator on load indicator	*	*	*	*
Mains available indicator	*	*	*	*
Mains on load indicator	*	*	*	*
Key switch selector	op	op	op	op
Settle delay time	0p	0p	0p	0p
Transfer delay (s)		*		*
Volt free contacts		*		*

\* 2 position key switch - "Auto mode", "Auto mode with manual mains restoration",

---

## Blades Power Generation

---

## Automatic load transfer switch

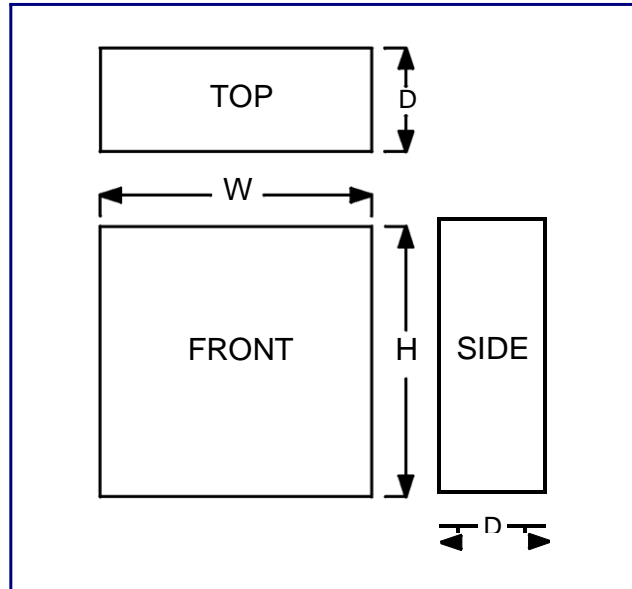
### Specifications

All components meet relevant European standards and regulations.

Panel meters	IEC51 BS89
	IP55 -25+50°C
Ammeters/voltmeters	Class 1.5
Frequency meters	Class 0.5
Selector switches	IEC73, 529
Circuit breakers;	
MCCB (non-auto)	IEC 947-3
ACB (non-auto)	IEC 947-3
Contactors	IEC 947-4-1

All contactors are rated AC1 (resistive) @ 40 degrees C. AC3 ratings are available on request.

### Dimensions

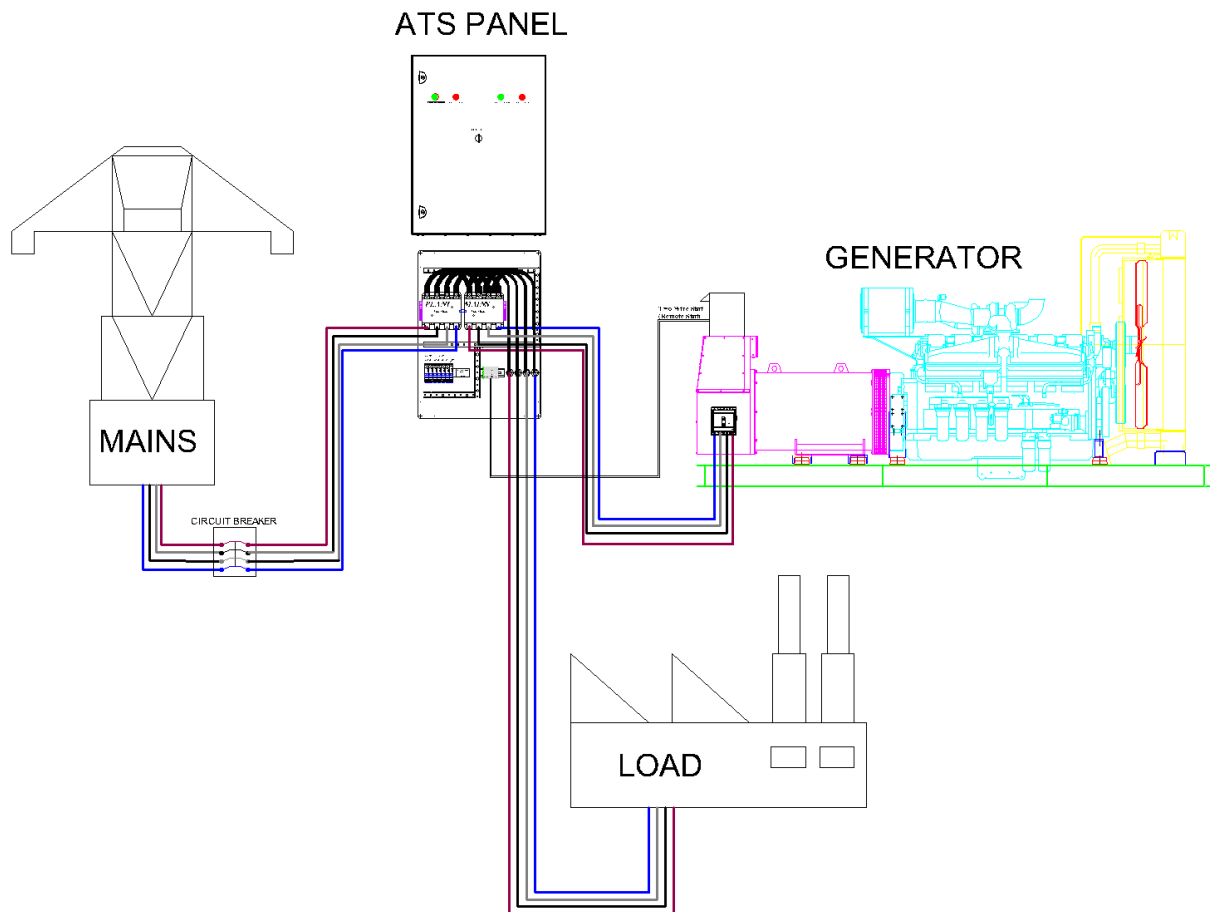


RATING	H	W	D
16-45A	400	400	200
45-90A	500	400	200
100-125A	600	400	200
140-200A	700	500	200
250-550A	1000	600	300
700-1000A	1200	800	400
1250-2000A	1800	1000	500
2500-4000A	2100	1000	600

NOTE: Certain combinations of additional options may require a larger enclosure.

## **Blades Power Generation**

## Typical Automatic Transfer Switch Installation



---

### Blades Power Generation

---

Tel: +44 (0)1453 821322 e-mail [sales@bladespowergeneration.com](mailto:sales@bladespowergeneration.com) <http://www.bladespowergeneration.com>  
67 Devereaux Crescent, Ebley, Stroud, Gloucestershire, GL5 4PX  
We reserve the right to amend specifications without prior notice.